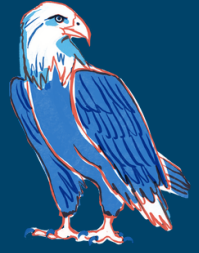




# AMERICAN HISTORY

## LESSON ELEVEN



Name: \_\_\_\_\_

Date: \_\_\_\_\_

### Instructions

*Follow along with the video and complete the following questions*

1. Who purchased Manhattan Island from the Lenape for a handful of trinkets?
  - a) Henry Hudson
  - b) Peter Minuit
  - c) William Penn
  - d) John Cabot
2. Which colony was founded as a haven for religious freedom, particularly for Quakers?
  - a) New York
  - b) New Jersey
  - c) Pennsylvania
  - d) Delaware
3. What was the name of the Dutch colony that later became New York?
  - a) New Amsterdam
  - b) New Netherlands
  - c) New Sweden
  - d) New England
4. Who founded the colony of Pennsylvania?
  - a) King Charles II
  - b) The Duke of York
  - c) William Penn
  - d) Roger Williams
5. Which group introduced the log cabin to America?
  - a) The English
  - b) The Dutch
  - c) The Swedish
  - d) The Quakers





# AMERICAN HISTORY

## LESSON ELEVEN



6. What was the name of the system used by the Dutch to encourage settlement in New Netherlands?
- a) Patron system
  - b) Patroon system
  - c) Plymouth system
  - d) Proprietary system
7. Which of the following was NOT a reason the English wanted to take control of New Netherlands?
- a) It created a barrier between northern and southern English colonies
  - b) The Dutch had a prosperous fur trade
  - c) The Dutch controlled a fine harbor at New Amsterdam
  - d) The Dutch were allies with the French
8. What was the original name of the city that became New York?
- a) New Amsterdam
  - b) Fort Orange
  - c) Fort Christina
  - d) Manhattan
9. Which religious group started the Underground Railroad to help slaves escape?
- a) Puritans
  - b) Quakers
  - c) Separatists
  - d) Anglicans
10. What year did William Penn found Philadelphia?
- a) 1664
  - b) 1681
  - c) 1682
  - d) 1702



# AMERICAN HISTORY



## LESSON ELEVEN

### Essay Questions

1. Explain the significance of the New England Confederation in early American history. How did it set a precedent for future cooperation among the colonies?
2. Compare and contrast the founding and development of Pennsylvania and Massachusetts Bay Colony. How did their approaches to religious freedom differ?
3. Discuss the role of the Dutch in early American colonial history. How did their presence impact the development of the region that became New York and New Jersey?
4. Analyze the reasons behind the English takeover of New Netherlands. What were the long-term consequences of this action for the development of the middle colonies?
5. Evaluate the impact of William Penn's policies on the success of Pennsylvania as a colony. How did his approach to governance and relations with Native Americans differ from other colonial leaders of the time?





# AMERICAN HISTORY



## LESSON ELEVEN

### Answers

- 1.B
- 2.C
- 3.B
- 4.C
- 5.C
- 6.B
- 7.D
- 8.A
- 9.B
- 10.C

